



MONTHLY MEMBERSHIP PROGRESS REPORT

District 128

Results as of: 06/30/2018

GMT: JOOST PAIJMANS

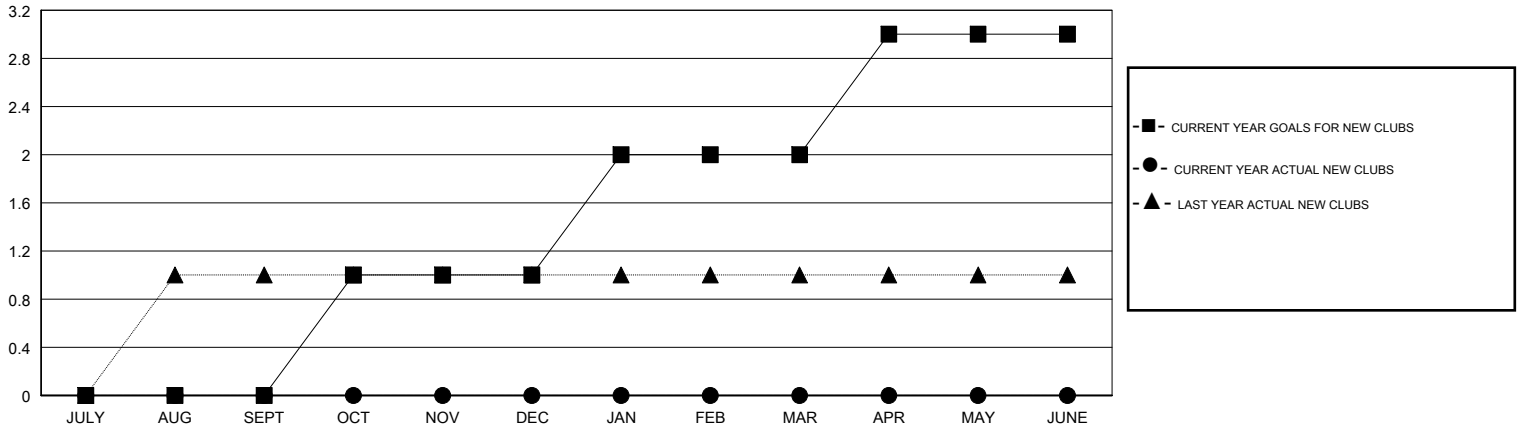
LOCATION ISRAEL

GMT CA

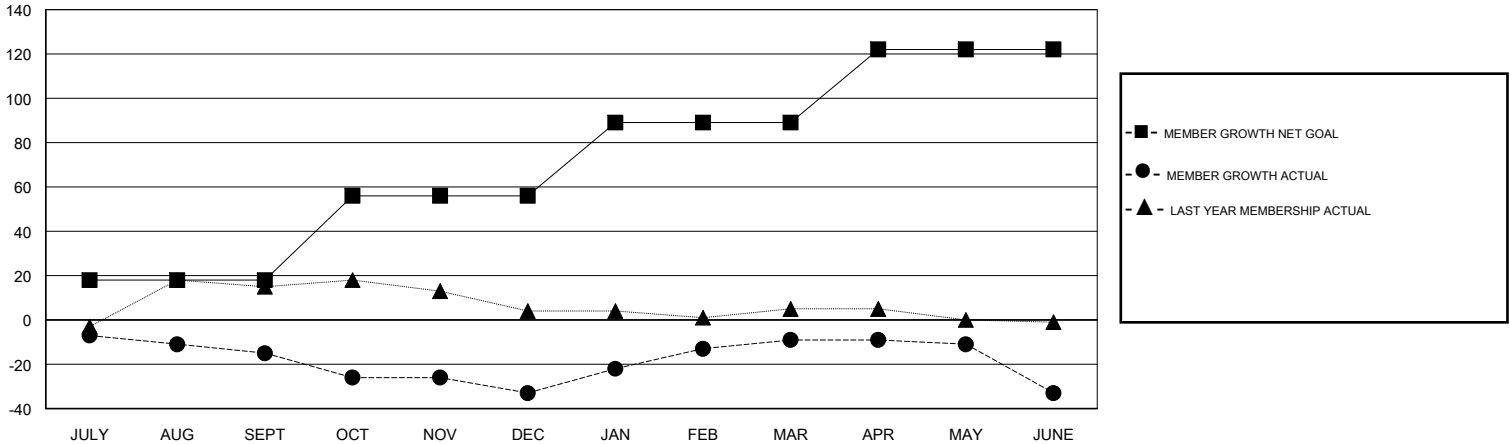
Clubs			
RESULTS FOR 2017-2018			
QUARTER	NEW CLUB GOAL	NEW CLUBS	DROPPED CLUBS
JULY/AUG/SEPT	0	0	0
OCT/NOV/DEC	1	0	0
JAN/FEB/MAR	1	0	0
APR/MAY/JUNE	1	0	1

Members			
RESULTS FOR 2017-2018			
QUARTER	MEMBER GROWTH NET GOAL	MEMBER GROWTH ACTUAL	DROPPED MEMBERS ACTUAL (including transfers)
JULY/AUG/SEPT	18	0	15
OCT/NOV/DEC	38	12	28
JAN/FEB/MAR	33	35	9
APR/MAY/JUNE	33	34	57

GOALS AND ACTUAL NEW CLUBS CUMULATIVE



GOALS AND ACTUAL MEMBERS CUMULATIVE



DROPPED CLUBS: 1

16 CLUBS OF 27 ADDED 1 OR MORE NEW MEMBERS

GENDER DISTRIBUTION	
MALE	331 (43.55%)
FEMALE	429 (56.45%)
Women Percentage Fiscal Year Goal: 40%	

DROPPED MEMBERS	
DECEASED	4
CLUB CANCELLED	0
OTHER	105
TOTAL	109

[CLICK HERE FOR CUMULATIVE MEMBERSHIP DATA](#)

TOTAL FAMILY UNIT MEMBERS	0
FAMILY MEMBERS PAYING HALF DUES	0